



Axio Way, London, E3

BUTLER & STAG



**Guide Price £325,000 - £350,000**  
**Discover contemporary urban living in this chic one-bedroom apartment located in the desirable Euler Court, Bow E3. Situated within a modern development, this property offers a perfect blend of comfort, style, and convenience, making it an ideal choice for first-time buyers, young professionals.**



## Leasehold

- Striking Modern Development
- Two Juliet Balconies
- Landscaped Communal Gardens
- Bike Storage
- Furze Green Park On Your Door Step
- One Bedroom
- Secure Development
- Close to Devons Road DLR
- Chain Free
- EWS1 Compliant

This secure gated development boasts a stylish and modern finish. At over 525 Sq/Ft, this large one bedroom apartment features a spacious open plan kitchen/living area with fully integrated appliances, wooden floors, floor to ceiling windows and a Juliet balcony overlooking the internal communal courtyard. The double bedroom boasts its own Juliet balcony and fitted wardrobes and completing the property is a modern three piece bathroom.

Euler Court is a private development in Bow, favourably adjacent to Furze Green Park and offers excellent transport links connecting to The DLR connections of Langdon Park and Devons Road connecting Canary Wharf within minutes are approximately within a half mile radius. All of which offer quick access to the City and beyond.

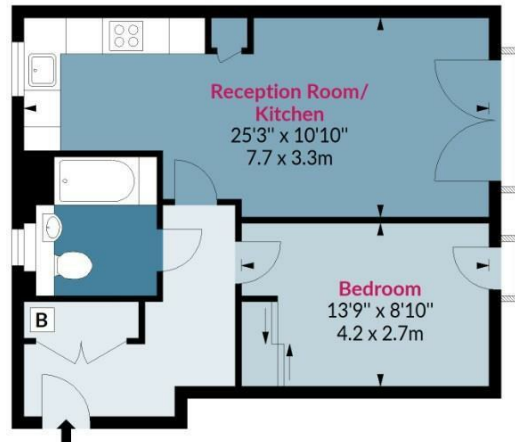




## Euler Court, Axio Way Bow, E3 4FA

Approx. Gross Internal Area 527 Sq Ft - 48.96 Sq M

**BUTLER & STAG**



## Second Floor

Floor Area 527 Sq Ft - 48.96 Sq M



Measured according to RICS IPMS2. Floor plan is for illustrative purposes only and is not to scale. Every attempt has been made to ensure the accuracy of the floor plan shown, however all measurements, fixtures, fittings and data shown are an approximate interpretation for illustrative purposes only. 1 sq m = 10.76 sq feet.

lpaplus.com

Date: 2/5/2023

**BUTLER & STAG**

☎ 020 8102 1236

🏠 508 Roman Road, Bow, London, E3 5LU

✉ bow@butlerandstag.com

[www.butlerandstag.uk](http://www.butlerandstag.uk)

IMPORTANT NOTICE - These particulars have been prepared in good faith and they are not intended to constitute part of an offer or contract. We have not performed a structural survey on this property and the services, appliances and specific fittings have not been tested. All photographs, measurements, floor plans and distances referred to are given as a guide and should not be relied upon.